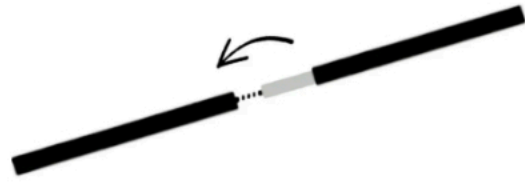


WHEN TO USE THE SHADY

Shady is made from a lightweight material, meaning the shade will fly even in the slightest breeze. Make sure your spot offers steady wind from 1 direction and always set of the shade with your back into the wind while holding the shade “downwind”.

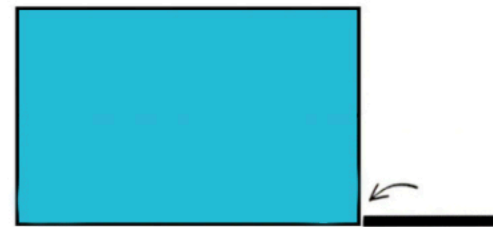


STEP 1

CONNECT ONE SET OF POLES ONLY

STEP 2

LAY CANOPY FLAT, AND THREAD POLES THROUGH FRONT SLEEVE

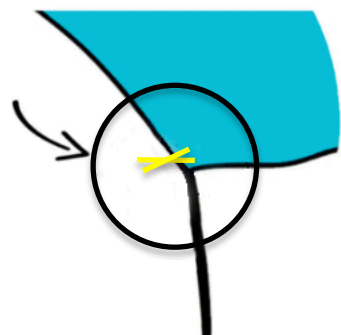
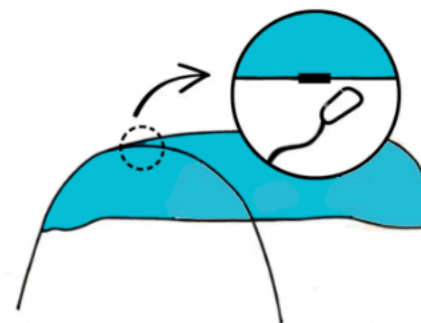


STEP 3

EITHER USE YOUR COOLER OR FILL A BAG WITH SAND & ATTACH THE ROPE TO COOLER (OR SAND BAG) AS A COUNTERWEIGHT.

STEP 4

CONNECT OTHER END OF ROPE WITH CARABINER TO FRAME OF SHADE



STEP 5

USE THE CLAMPS ON BOTH END SIDES TO KEEP SHADE IN PLACE

STEP 6

ERECT SHADE, PLANT POLES FIRMLY INTO SAND & ENJOY THE SHADE!

